



WIND PIONEER

GENERAL INFORMATION

1A1 CRANE BARGE, DYNPOS-AUT, WIND TURBINE SERVICE AND CRANE UNIT, R2.

Flag: Danish

Length (overall): 56.0/92.0 m

Length (between P.P): 50.0 m

Breadth (moulded): 28.0 m

Depth (moulded): 4.50 m

Draft design: 3.0 m

Gross tonnage (GT): 2400

Net tonnage (NT): 710

Light ship: 2400 t

Deadweight/payload: 650 t

Turbine access: up to 25 m/s

OPERATING CONDITIONS

Service: R2 (as per DNV rules)

Endurance: 30 days (approx.)

Jacking operations (design):

- Wave height: 2.5 m (Hs)
- Wave period: 3.0 s – 11.0 s (T)
- Wind speed: 14.0 m/s (1 min means 10 m above sea level)
- Current: 2.0 kn
- Water depth: 34 m

Jacked operating condition (main crane operating):

- Wave height: 2.5 m (Hs)
- Wave period: 3.0 s – 11.0 s (T)
- Wind speed: 14.0 m/s (1 min means 10 m above sea level)
- Current: 2.0 kn
- Water depth: 34 m

Jacked survival (design):

- Wave height: 7.5 m (Hs)
- Wave period: 5.0 s – 18.0 s (T)
- Wind speed: 36 m/s (1 min means 10 m above sea level)
- Current: 2.0 kn
- Water depth: 15 m

Maximum operating depth:

34 m (with 6 m penetration and 3 m air gap)



ZITON

SPECIFICATIONS | J/U WIND PIONEER

PERFORMANCE

Transit speed (under towing):

Under progress (indicated value: 1.5m Hs)

Fuel consumption:

- Approx. 0.5 t/h during positioning in wind farm

Propulsion system:

- 4 azimuth thrusters for positioning on location (744 kW each)
- The propulsion system is arranged for dynamic positioning with DP1 notation

Jacking speed:

- 30 m/h (lifting out of water)
- 30 m/h (leg handling)

Jacking: 800 t/leg

Pre-driving: 1200 t/leg

Holding: 1200 t/leg

Dual operator station according to DP1:

- Dual controller
- 2 fan beams
- Air gap sensors
- GMDSS stations A2
- X-band radars, Ecidis etc

CARGO & LIFTING CAPACITY

Deadweight: 650 t

Cargo area: 530 m² (approx.)

Deck load: 7.5 t/m² (with strong points)

Main crane operating criteria: Wind speed 25/s

Main hoist lifting capacity:

- 232 t @ 19 m radius @ 78 m height above deck
- 44 t @ 65m radius @ 42 m height above deck

Auxiliary hoist lifting capacity:

- 50 t @ 18 m radius @ 74 m height above deck
- 40 t @ 69.8 m radius @ 48 m height above deck
- Auxiliary hoist approved for man riding; SWL max 2 tons

Auxiliary crane:

- 5 t @ 4 m radius
- 3 t @ 10 m radius

ACCOMMODATION

ACCOMMODATION ACCORDING TO ILO MLC 2006.

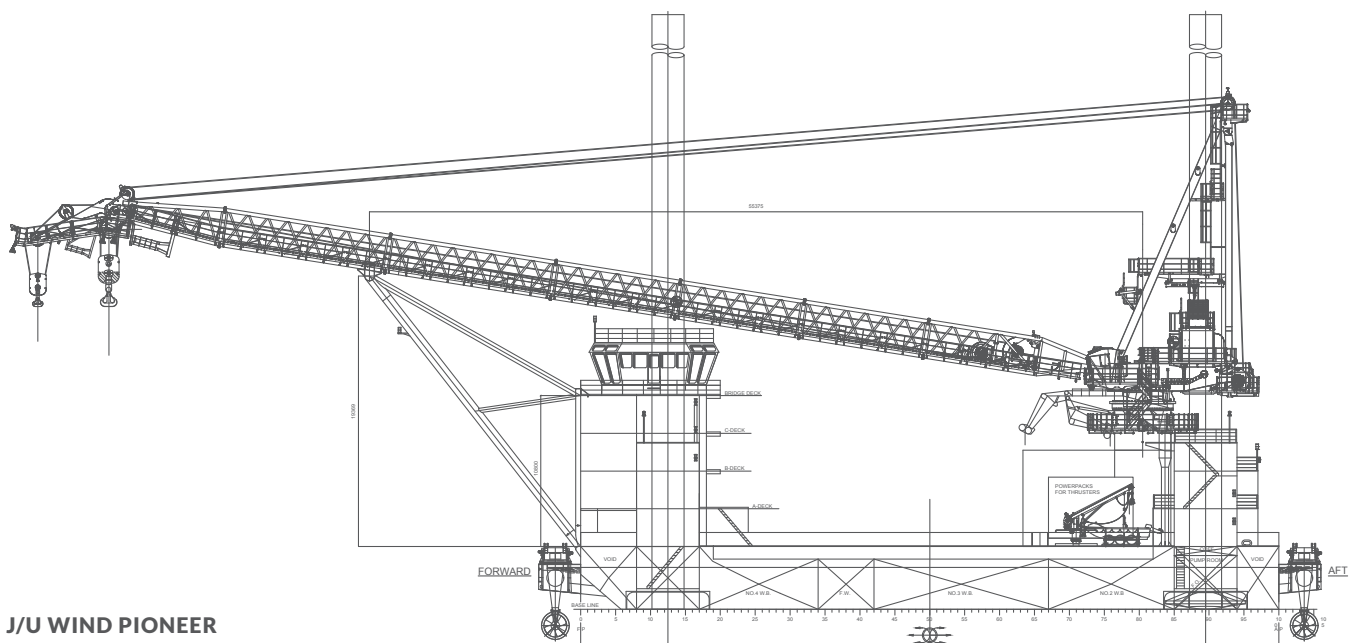
Client accommodation:

- 22 charterer's personnel in single cabins
- All cabins are with bath, toilet, TV and ethernet connect

Client facilities: Client office, coffee shop, day room and client changing room

Crew facilities: Deck room, day and changing rooms

Shared facilities: Mess room, laundry and gymnasium



J/U WIND PIONEER



ZITON A/S
Bygholm Søpark 21 E
DK-8700 Horsens Denmark

Phone +45 87 44 44 00
sales@ziton.eu
www.ziton.eu

